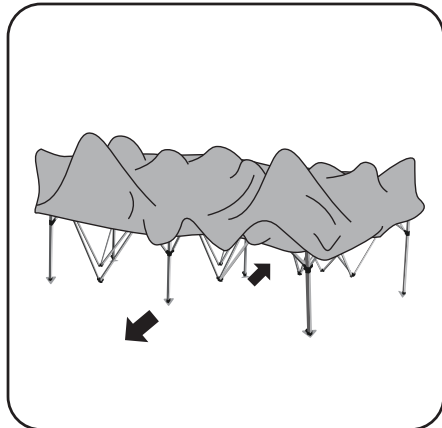
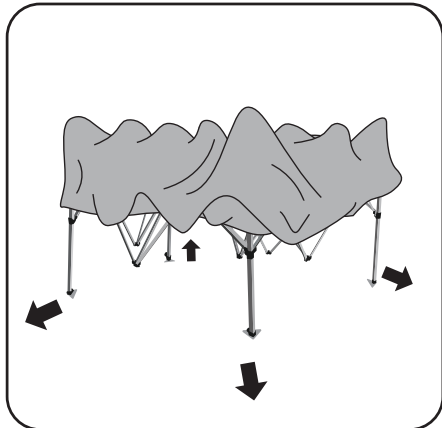
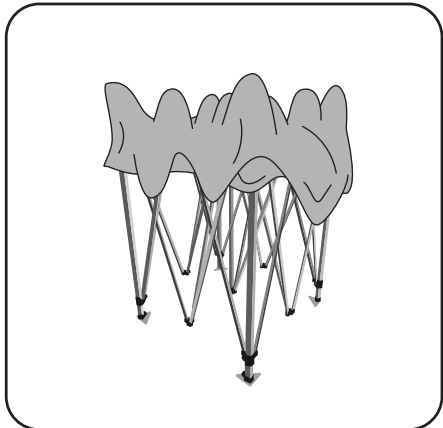


MARQUEE Assembly Guide

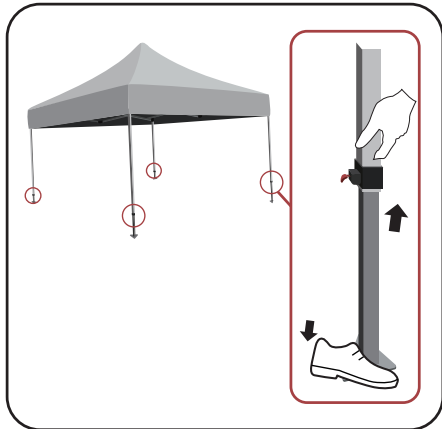
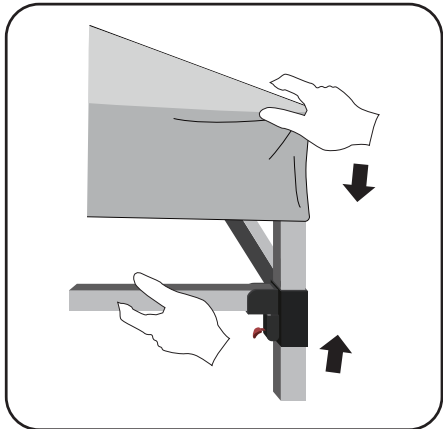
IMPORTANT: Product Fragile - Handle with Care



1. Place instant canopy in center of area to be sheltered. Remove cover. With partner on opposite side, grasp two outer legs, lift off ground and step backwards, stopping at full arms length.

2a. Grasp the bottom of the diamond (shown), on opposite sides. Lift up and step backwards until shelter is fully opened, being careful not to pinch fingers. (for 3x6m shelter. see 2b)

2b. (For 3x6m shelter) With partner, move to middle leg of 6m side. Grasp bottom of "diamond"(show). Lift up and step backwards at the same time until shelter is full opened, being careful not to pinch fingers at end of truss.



3. Engage the auto slider at each corner by pushing up with one hand while holding down top of leg with the other hand. Snap button will engage in hole. Repeat on all other legs.

4. Lift two adjacent outer legs up and pull out the inner legs until snap button locks. Repeat on all legs. Raise or level the shelter using adjustment holes found near bottom of each outer leg.

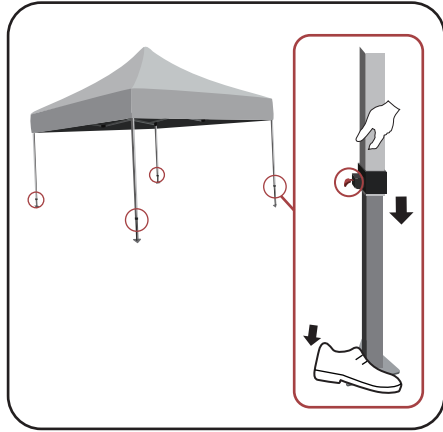
5. Complete

IMPORTANT INFORMATION

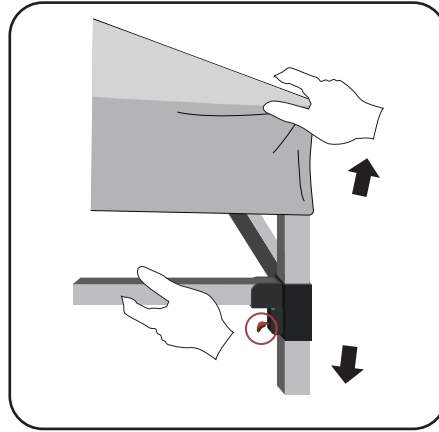
1. Always stake or weight down your instant canopy. Take instant canopy down if heavy winds threaten to blow.
2. Use a mild soap (not detergent) and plenty of water for top cleaning.
3. Let the instant canopy top and frame dry completely before closing or storing.
4. The instant canopy is designed as temporary shelter. We do not recommend leaving it up for extended periods. Do not leave instant canopy unattended.
5. Save instructions for future reference.

MARQUEE Disassembly Guide

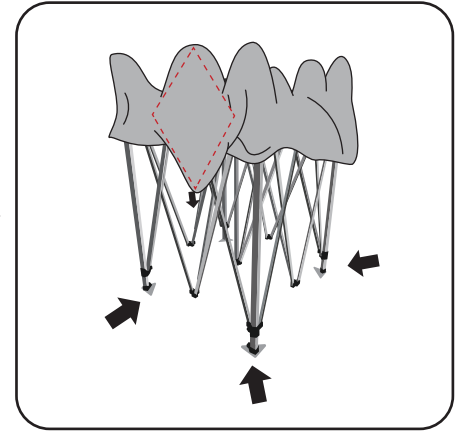
IMPORTANT: Product Fragile - Handle with Care



1. Lift two adjacent outer legs slightly, depress snap button, telescope inner legs up into outer legs. Repeat on opposite side.



2. Release auto slider at each corner by pushing up slightly with one hand while depressing snap button to release pressure on slider. Repeat on all four corners.



3. Grasp top of diamond on opposite sides. Lift up, shake shelter a little while stepping towards partner until is 3/4 closed. Grasp two outer legs. Push together to fly close.

BE CAREFUL NOT TO PINCH FINGERS

IMPORTANT INFORMATION

1. Always stake or weight down your instant canopy. Take instant canopy down if heavy winds threaten to blow.
2. Use a mild soap (not detergent) and plenty of water for top cleaning.
3. Let the instant canopy top and frame dry completely before closing or storing.
4. The instant canopy is designed as temporary shelter. We do not recommend leaving it up for extended periods. Do not leave instant canopy unattended.
5. Save instructions for future reference.